

NORTH TOWNHOME 13

interior: 1,491 sf

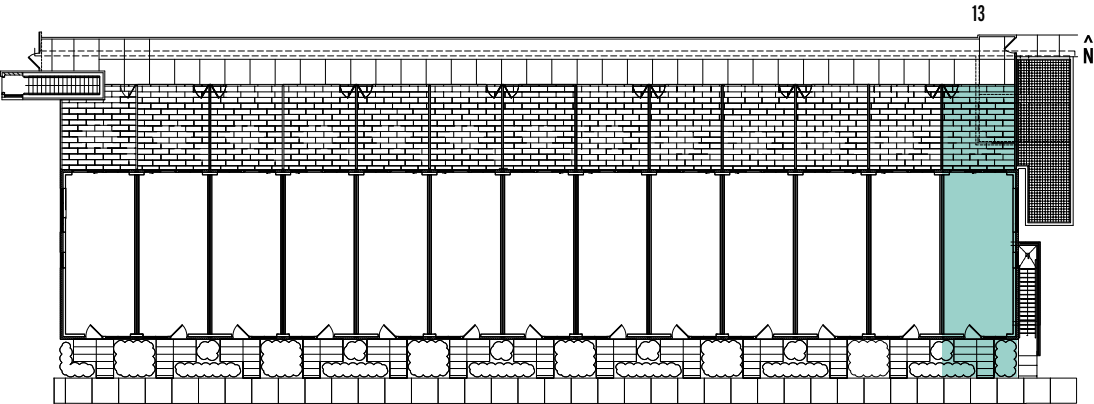
front patio: 45 sf  
rear patio: 230 sf  
balcony: 65 sf

total: 1,831 sf

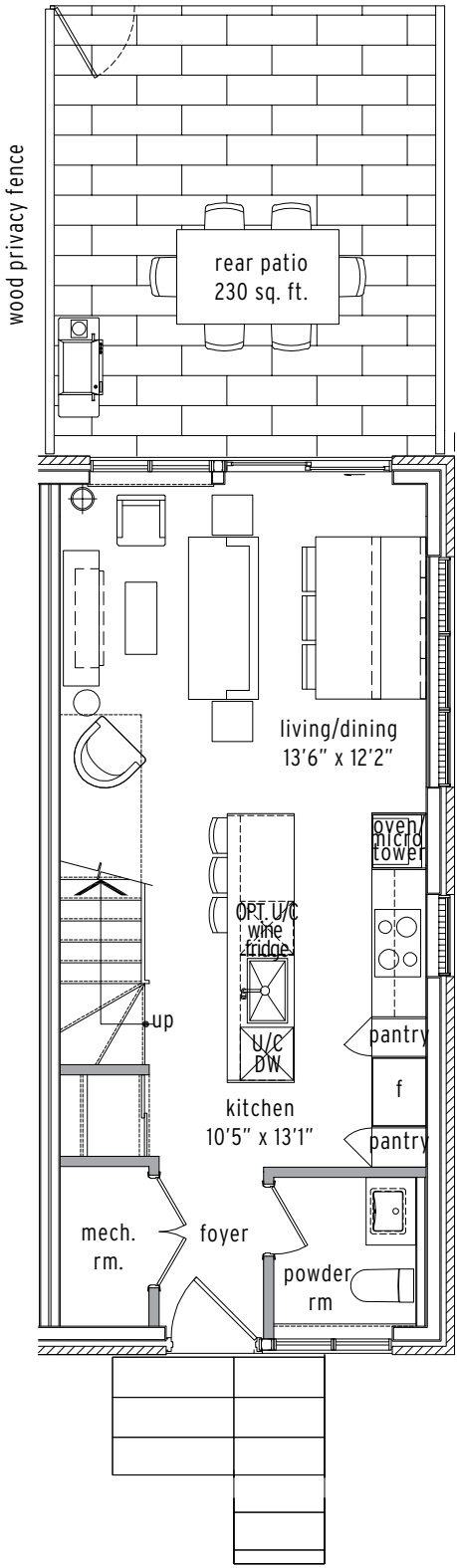
FRONT ELEVATION



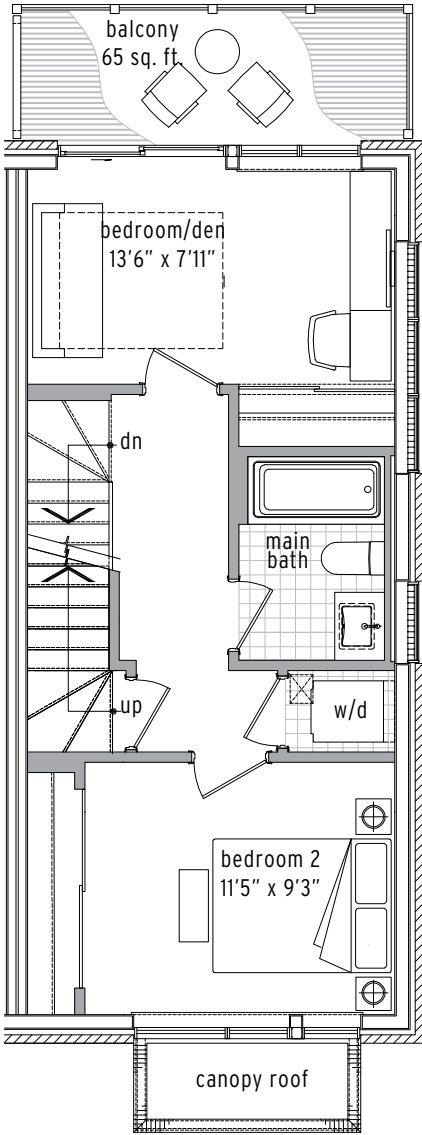
KEY PLAN



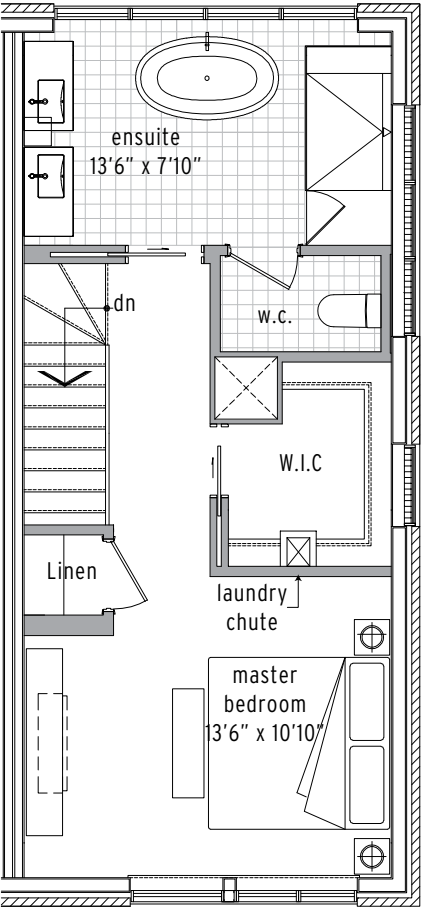
NORTH TOWNHOME 13



Main Floor



2nd Floor



3rd Floor



All floor plans, dimensions, specifications, drawings, renderings and elevations are approximate, not to scale, and are subject to change without notice and are subject to architectural review and revision, including without limitation that the Unit layout may be constructed as a mirror image of what is shown. Actual dimensions and square footage may vary from that stated herein. Window, spandrel panel and door locations, quantity, size, type and colour may vary without notice. All materials, models, finishes, tile patterns, specifications, details and dimensions, if any, are approximate and subject to change without notice. Bulkheads and mechanical systems elements including but not limited to heating, cooling, plumbing and ERV equipment in or servicing the Unit are not shown on this plan. Number of steps and railings provided may vary. Balconies , patios and planters , if any, are exclusive use common elements or common elements as per plan, may vary, are shown for display purposes only and their location and size are approximate and are subject to change without notice. Interior, exterior furniture and barbeque are not included. The site Keyplan is shown for display purposes only, is approximate, not to scale, and subject to change without notice. E.&O.E. March, 2020.