

# Kinmount

ELEVATION B • 2,656 sq.ft.

4 BEDROOMS • 3.5 BATHS

# Kinmount

ELEVATION C • 2,656 sq.ft.

4 BEDROOMS • 3.5 BATHS

# Kinmount

ELEVATION A • 2,652 sq.ft.

4 BEDROOMS • 3.5 BATHS



**LINVEST**  
DO IT DIFFERENTLY

[linvest.com](http://linvest.com)

*gracefields*  
**REDUX<sup>3</sup>**

All floor plans, dimensions, specifications, drawings, renderings and elevations are approximate and not to scale. Information subject to architectural review and revision and to change without notice. Landscaping not included.  
07/28/2020

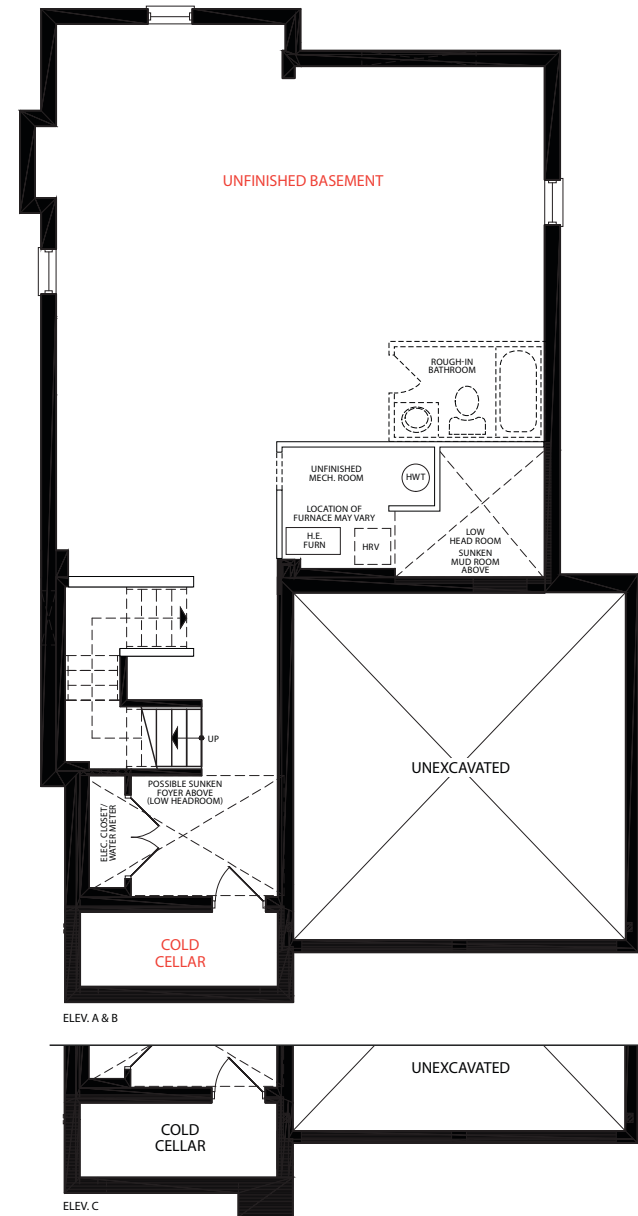


# Kinmount

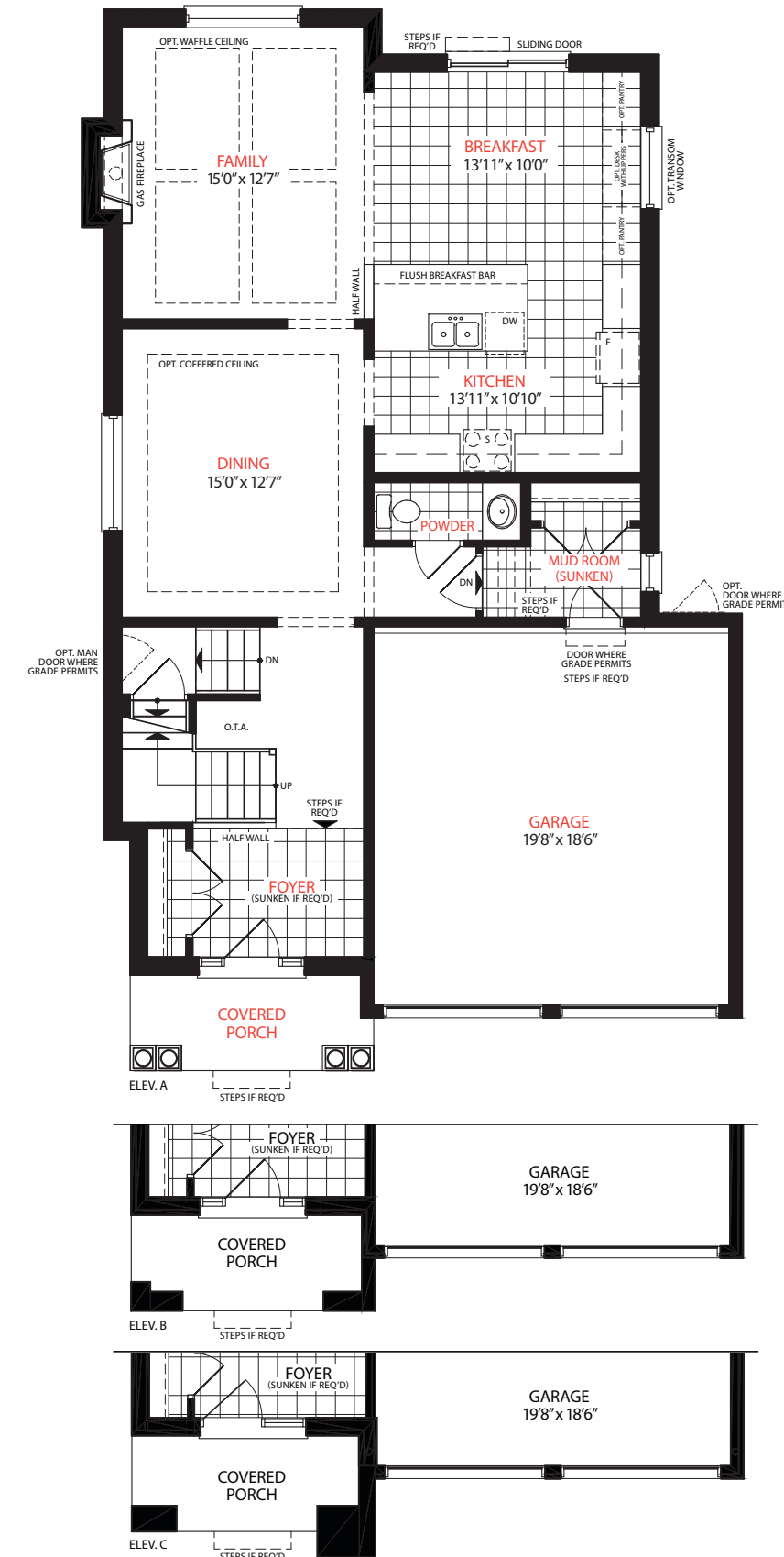
Elev. A & B • 2,652 sq.ft. | Elev. C • 2,656 sq.ft.

39' Series

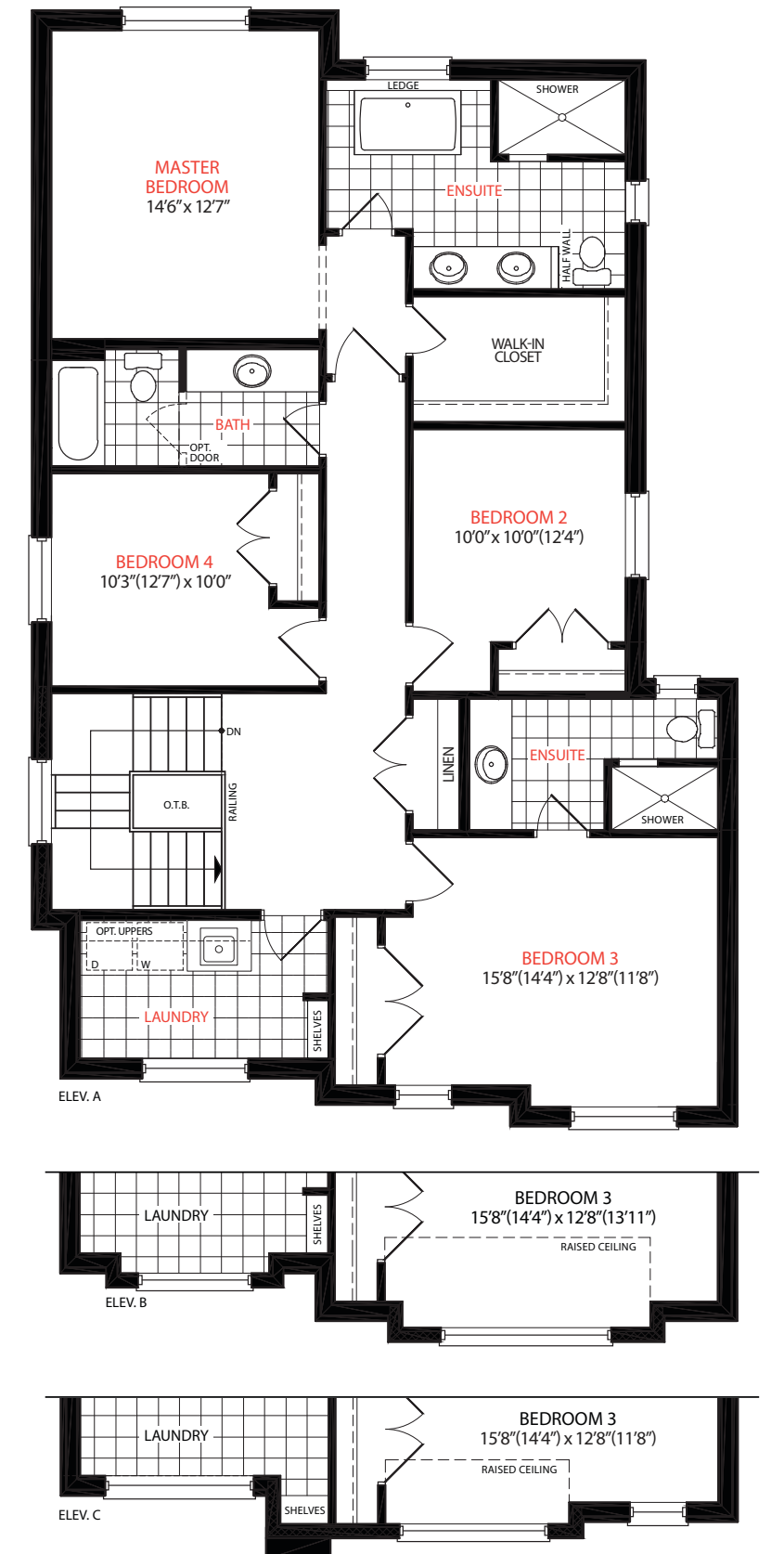
## Basement



## Main Floor



## Second Floor



39-2652

All floor plans, dimensions, specifications, drawings, renderings and elevations are approximate and not to scale. Information subject to architectural review and revision and to change without notice. The square footage is calculated from the outside dimension of the building on the first and second floor and includes the finished area of the basement if applicable. Garages, attics and unfinished area in the basement are not included in calculations. Bulkheads, box outs, mechanical and plumbing system components are not shown on this plan. Basement columns, hot water heater and furnace will be placed based on builder's requirements. Number, size, type, colour and location of windows, doors, steps and railings provided may vary per elevation, without notice. Actual useable floor space may vary from the stated floor area. E.&O.E. - D.O.P. 04/2022