

Hollyfield

43 ft. - 3,157 Sq.ft.

LINVEST
DO IT DIFFERENTLY

Elevation A
3,157 Sq.ft.

Elevation B
3,157 Sq.ft.





NORTH OAKVILLE

Hollyfield A

43 FT.

3,157 Sq.ft.
4 Bedrooms
3.5 Bathrooms

PLAN A

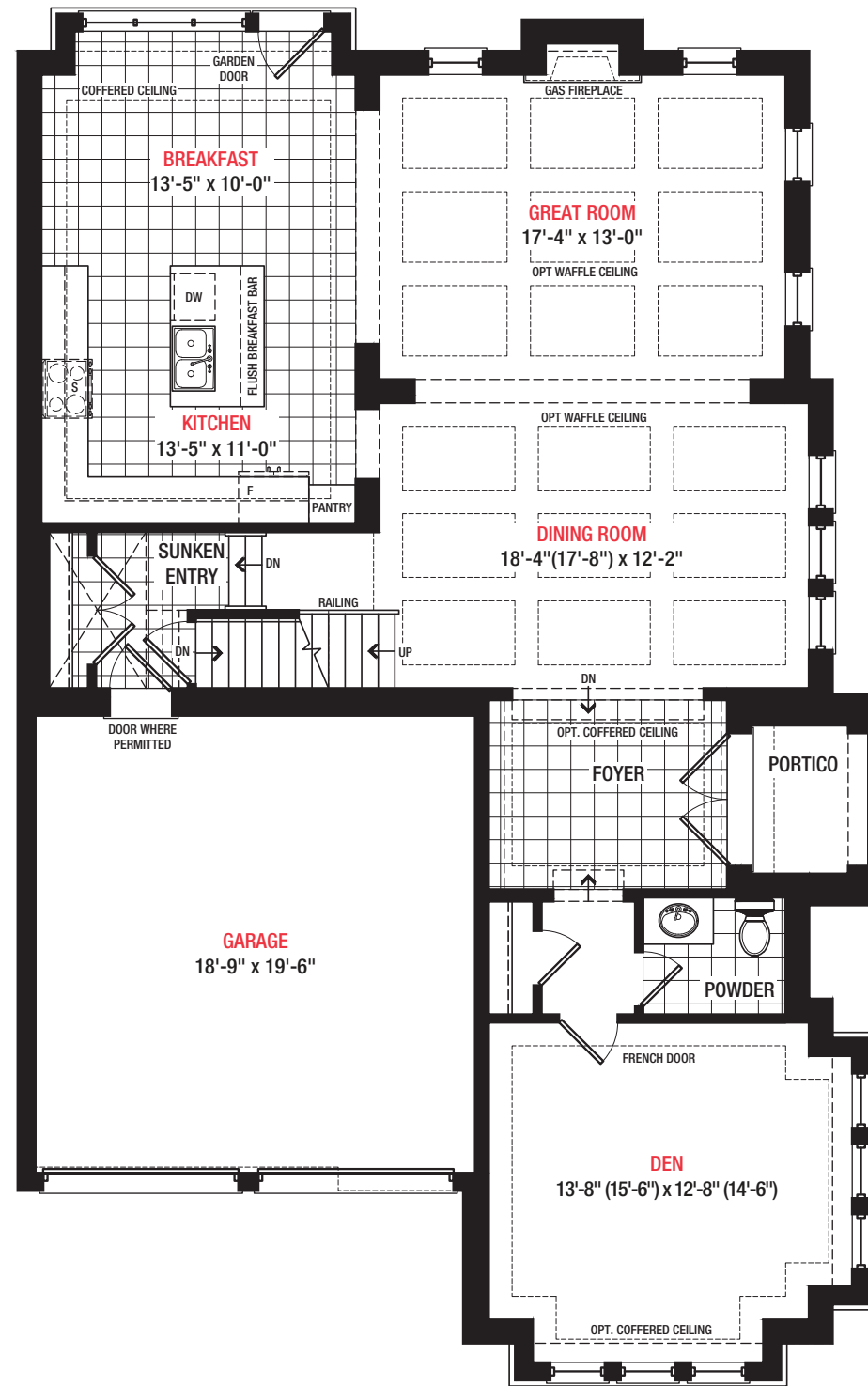


Disclaimer

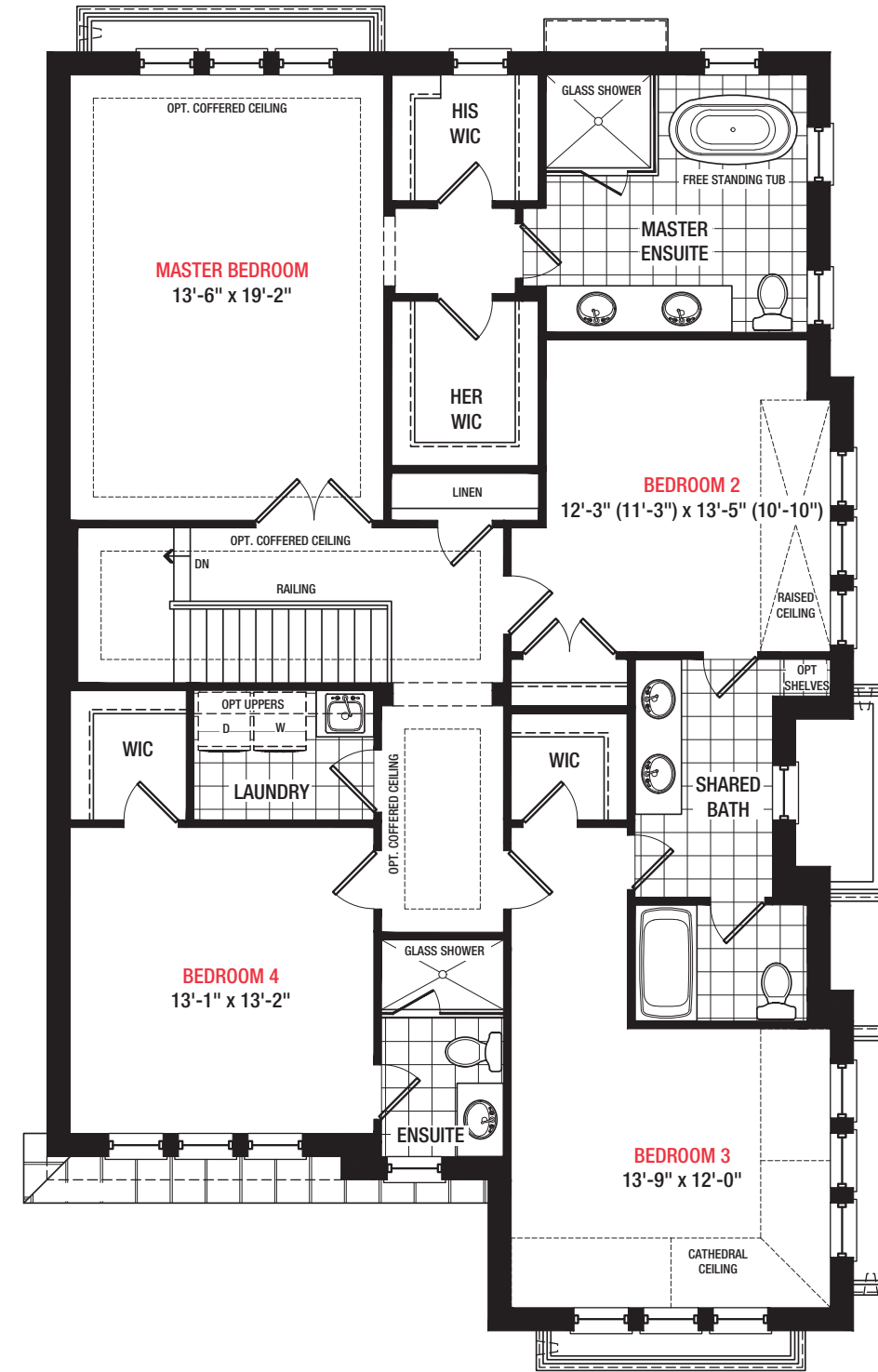
All dimensions are approximate. Information subject to change without notice. The square footage is calculated from the outside dimension of the building on the first and second floor and includes the finished area of the basement if applicable. Garages, attics and unfinished area in the basement are not included in calculations. Basement columns, hot water heater and furnace are not shown and will be placed based on builder's requirements. Number of steps and railings provided may vary due to grade. Windows vary as per elevation. Actual useable floor space may vary from the stated floor area. E.&O.E. - D.O.P. 10/31/18.

LINVEST

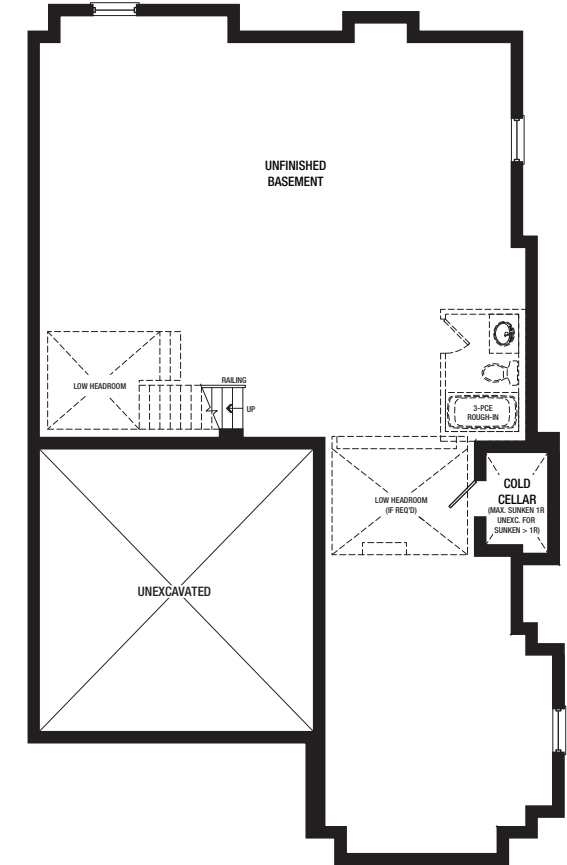
DIFFERENTLY II OD



GROUND FLOOR A



SECOND FLOOR A



BASEMENT A



NORTH OAKVILLE

Hollyfield B

43 FT.

3,157 Sq.ft.
4 Bedrooms
3.5 Bathrooms

PLAN B

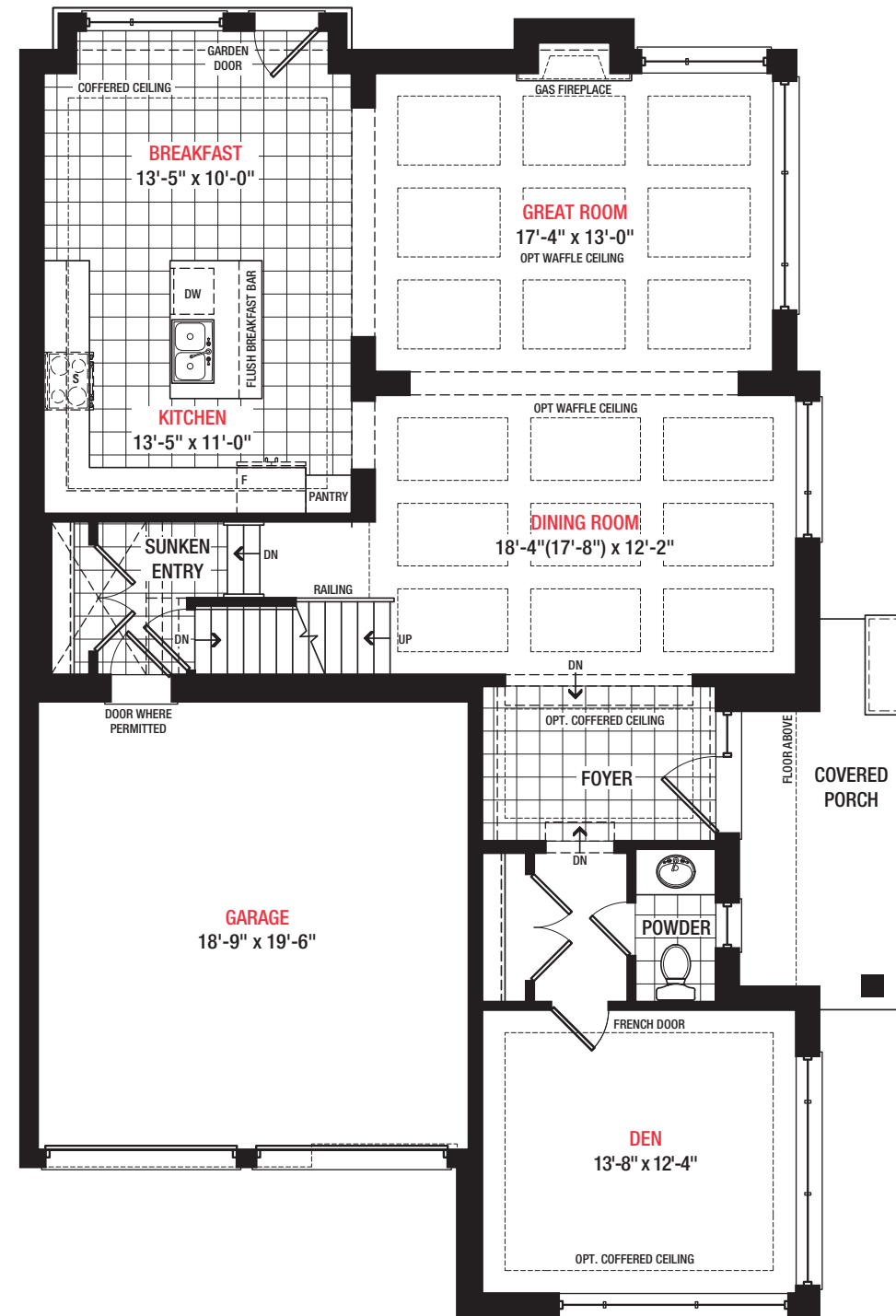


Disclaimer

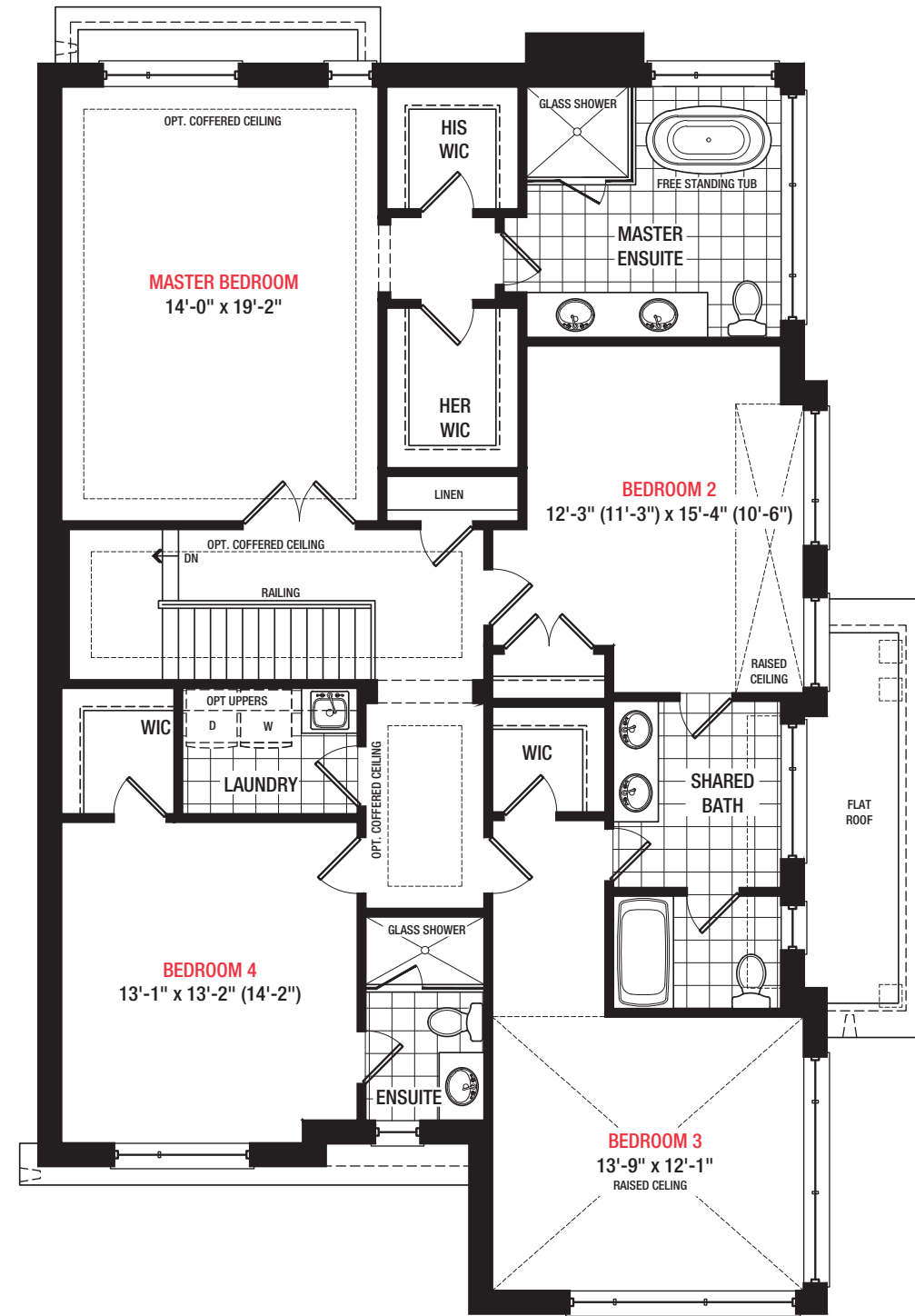
All dimensions are approximate. Information subject to change without notice. The square footage is calculated from the outside dimension of the building on the first and second floor and includes the finished area of the basement if applicable. Garages, attics and unfinished area in the basement are not included in calculations. Basement columns, hot water heater and furnace are not shown and will be placed based on builder's requirements. Number of steps and railings provided may vary due to grade. Windows vary as per elevation. Actual useable floor space may vary from the stated floor area. E.&O.E. - D.O.P. 10/31/18.

LINVEST

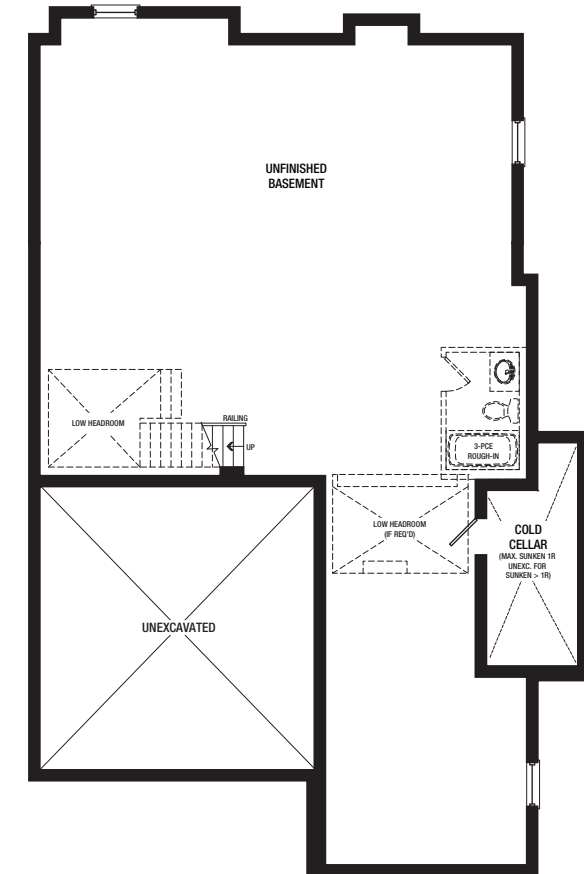
DIFFERENTLY II OD



GROUND FLOOR B



SECOND FLOOR B



BASEMENT B