

Fleetwood

ELEVATION B • 2,735 sq.ft.

4 BEDROOMS • 3.5 BATHS



Fleetwood

ELEVATION C • 2,735 sq.ft.

4 BEDROOMS • 3.5 BATHS



Fleetwood

ELEVATION A • 2,742 sq.ft.

4 BEDROOMS • 3.5 BATHS



LINVEST
DO IT DIFFERENTLY

linvest.com

All floor plans, dimensions, specifications, drawings, renderings and elevations are approximate and not to scale. Information subject to architectural review and revision and to change without notice.

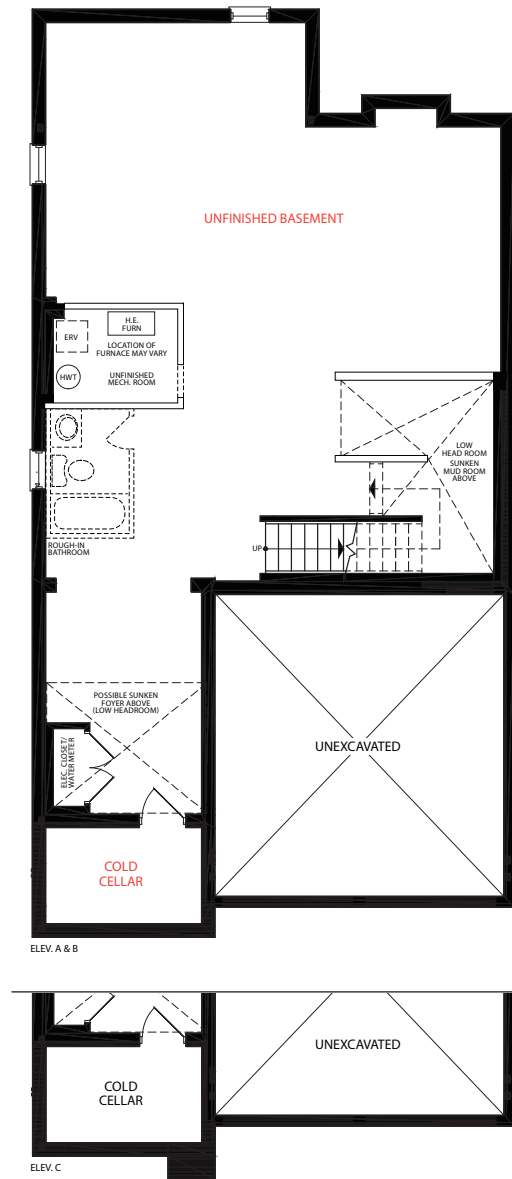
gracefields
REDUX³

Fleetwood

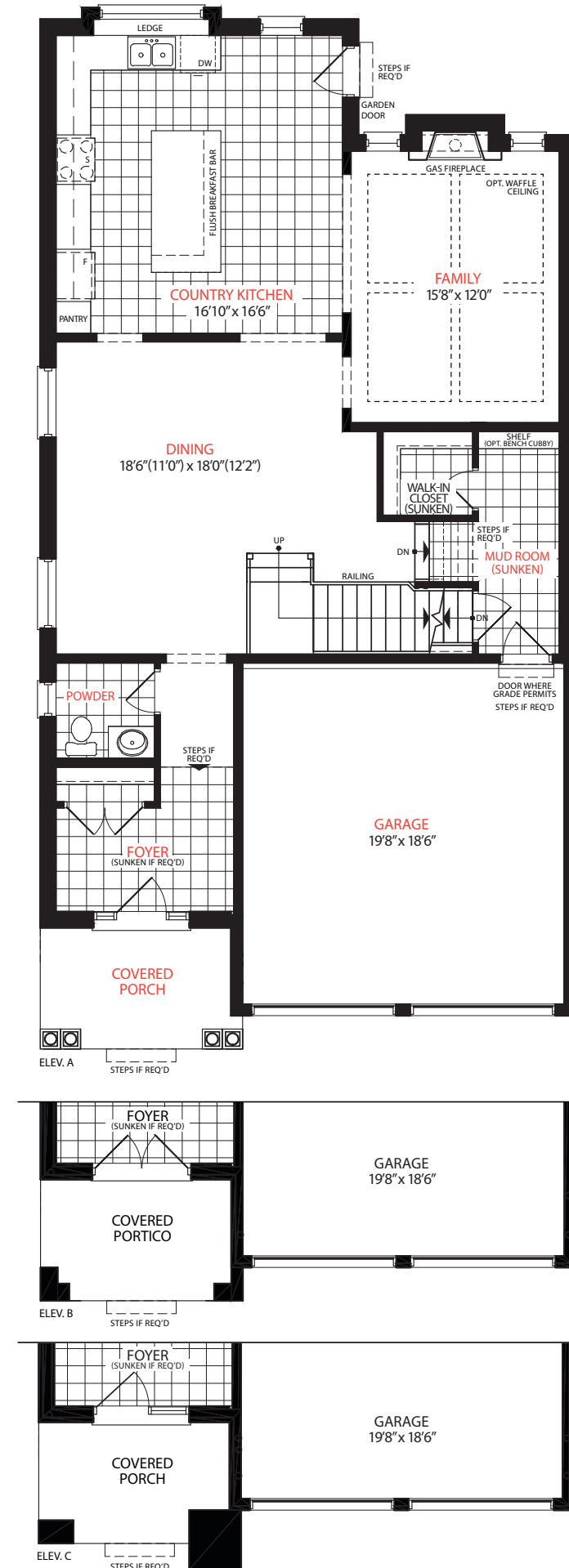
Elev. A • 2,742 sq.ft. | Elev. B & C • 2,735 sq.ft.

37' Series

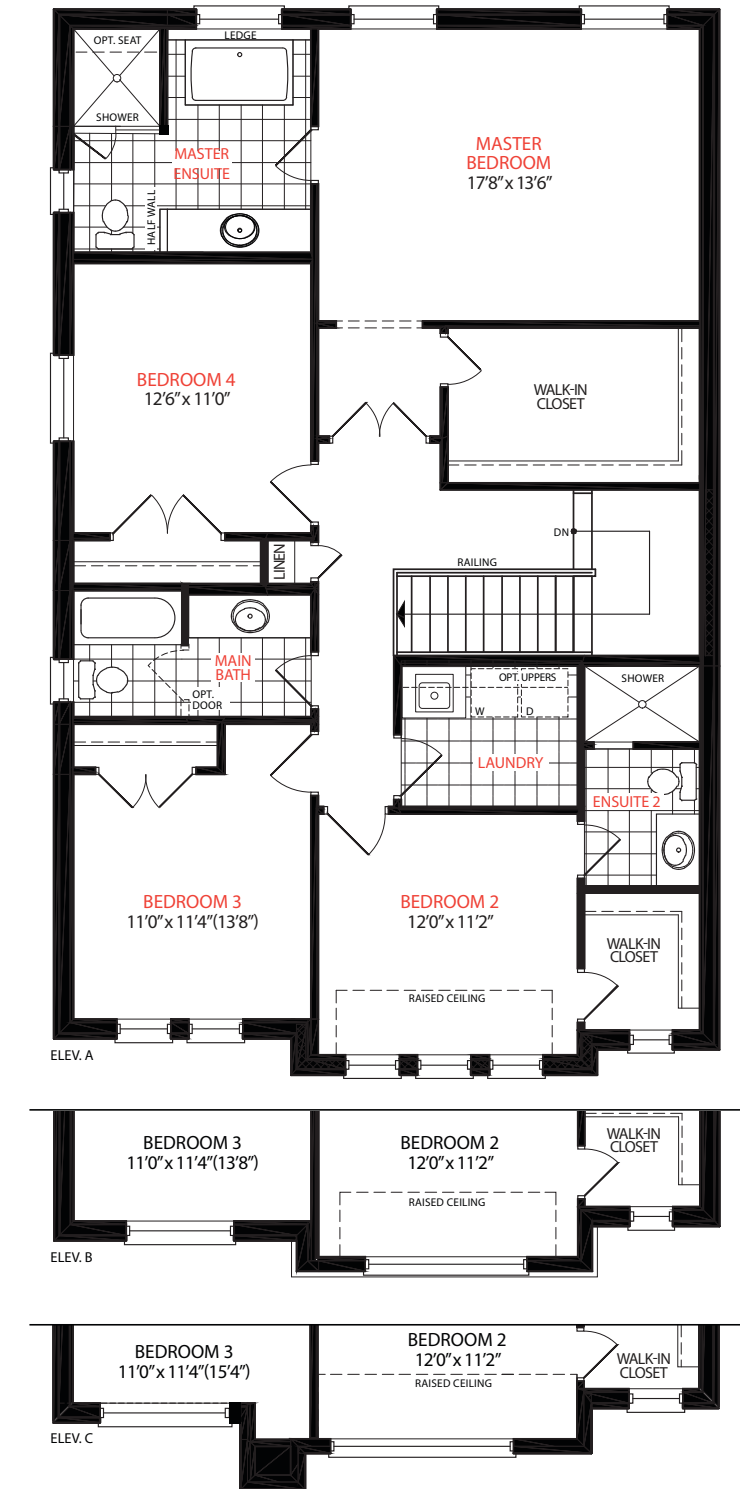
Basement



Main Floor



Second Floor



37-2742

All floor plans, dimensions, specifications, drawings, renderings and elevations are approximate and not to scale. Information subject to architectural review and revision and to change without notice. The square footage is calculated from the outside dimension of the building on the first and second floor and includes the finished area of the basement if applicable. Garages, attics and unfinished area in the basement are not included in calculations. Bulkheads, box outs, mechanical and plumbing system components are not shown on this plan. Basement columns, hot water heater and furnace will be placed based on builder's requirements. Number, size, type, colour and location of windows, doors, steps and railings provided may vary per elevation, without notice. Actual useable floor space may vary from the stated floor area. E.&O.E. - D.O.P. 04/2022