

Cresswell

ELEVATION B • 2,197 sq.ft.

4 BEDROOMS • 3.5 BATHS

Cresswell

ELEVATION C • 2,195 sq.ft.

4 BEDROOMS • 3.5 BATHS

Cresswell

ELEVATION A • 2,186 sq.ft.

4 BEDROOMS • 3.5 BATHS



LINVEST
DO IT DIFFERENTLY

linvest.com

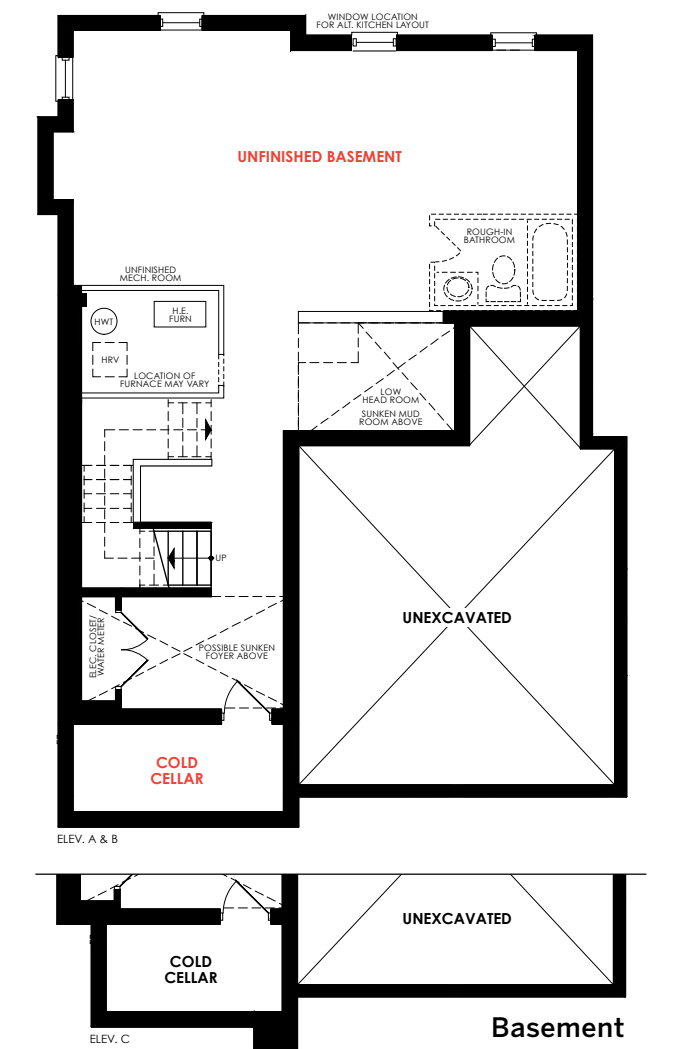
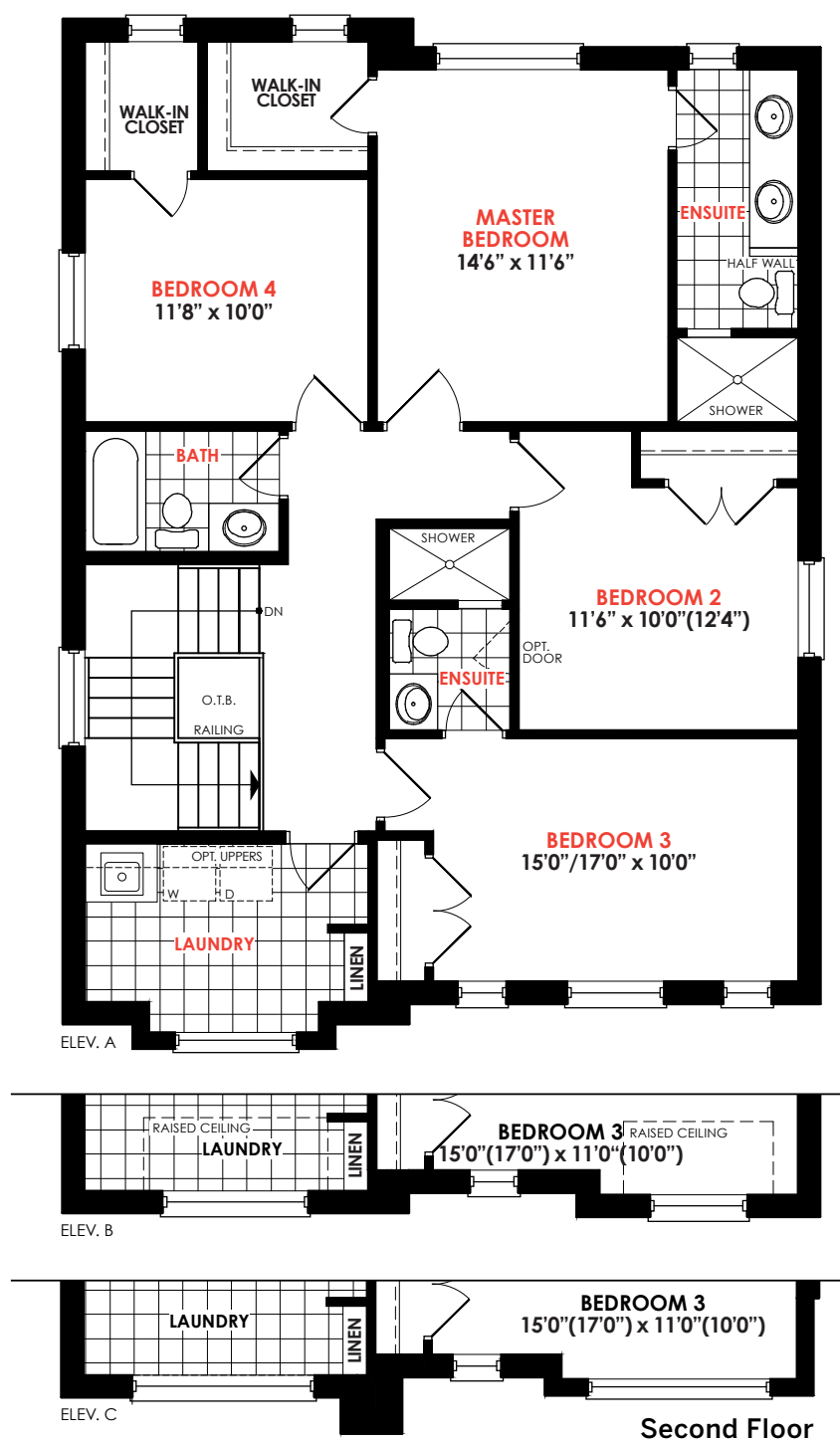
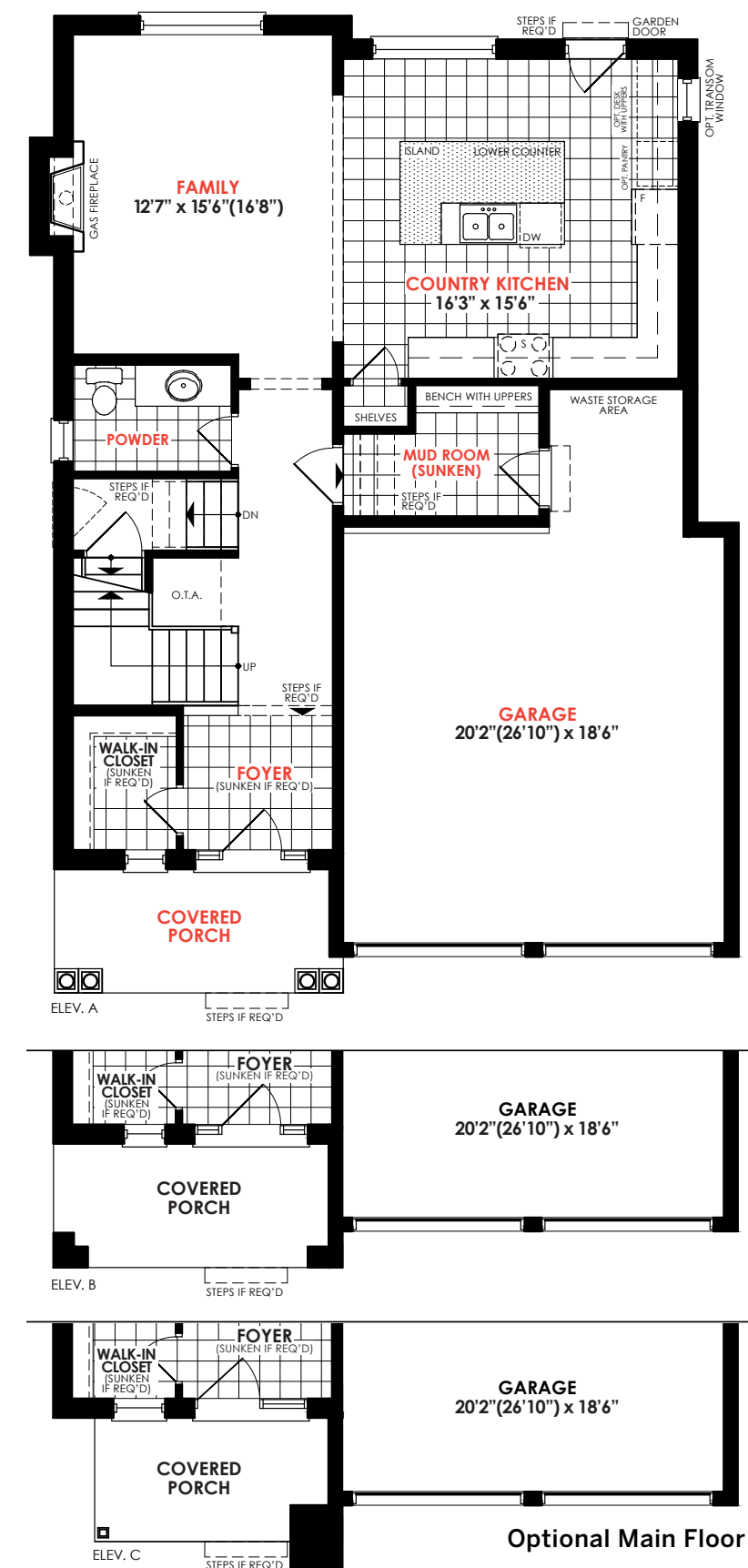
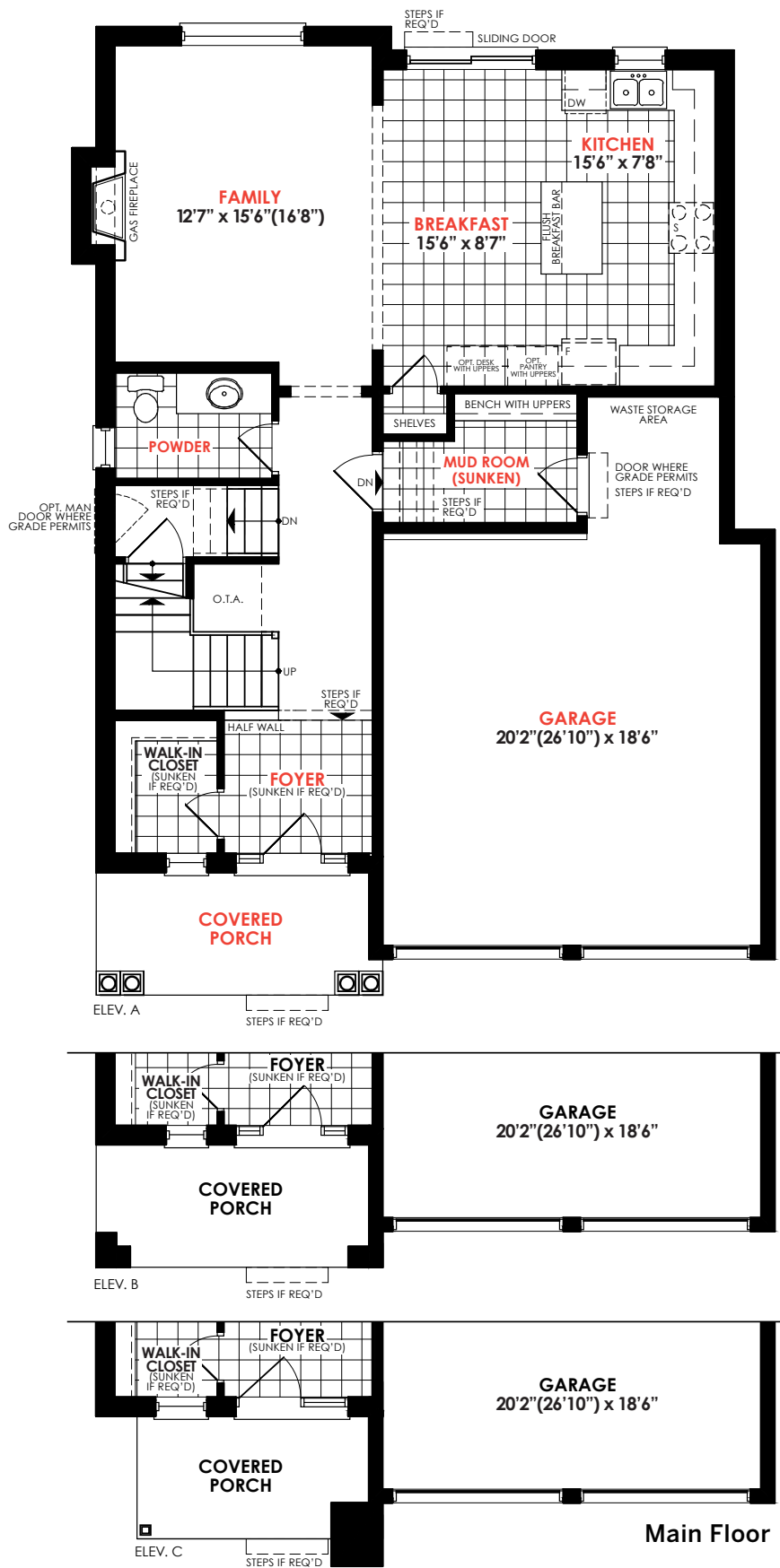
All floor plans, dimensions, specifications, drawings, renderings and elevations are approximate and not to scale. Information subject to architectural review and revision and to change without notice.

gracefields
REDUX

Cresswell

Elev. A • 2,186 sq.ft. | Elev. B • 2,197 sq.ft. | Elev. C • 2,195 sq.ft.

39' Series



All floor plans, dimensions, specifications, drawings, renderings and elevations are approximate and not to scale. Information subject to architectural review and revision and to change without notice. The square footage is calculated from the outside dimension of the building on the first and second floor and includes the finished area of the basement if applicable. Garages, attics and unfinished area in the basement are not included in calculations. Bulkheads, box outs, mechanical and plumbing system components are not shown on this plan. Basement columns, hot water heater and furnace will be placed based on builder's requirements. Number, size, type, colour and location of windows, doors, steps and railings provided may vary per elevation, without notice. Actual useable floor space may vary from the stated floor area. E.&O.E. - D.O.P. 07/2020