

# THE BIRKDALE



ELEVATION A - 3,574 SQ. FT.



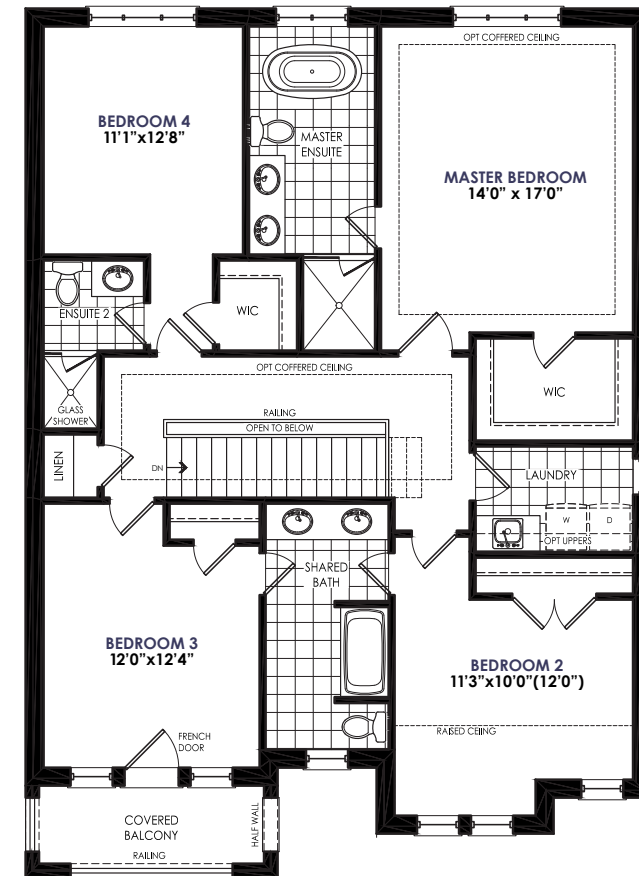
ELEVATION B - 3,577 SQ. FT.



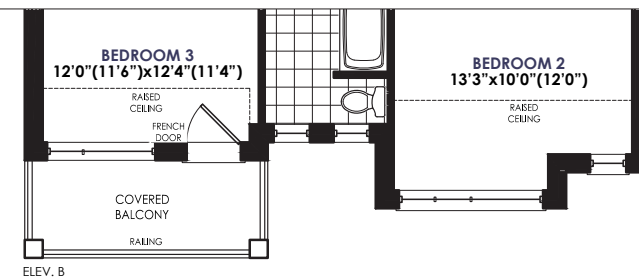
ELEVATION C - 3,572 SQ. FT.

The square footage for the Birkdale is calculated from the outside dimension of the building on the first and second floor and includes 801 sq. ft. of finished basement space.

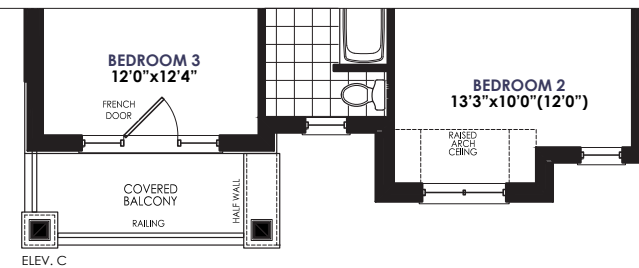
Renderings, elevations and architectural details are artist concept, all dimensions are approximate. All dimensions are approximate. Information subject to change without notice. Garages, attics and unfinished area in the basement are not included in calculations. Basement columns are not shown. Water heater and furnace will be placed based on builder's requirements. Number of steps and railings provided may vary due to grade. Windows vary as per elevation. Actual useable floor space may vary from the stated floor area. E.&O.E. - October, 2019



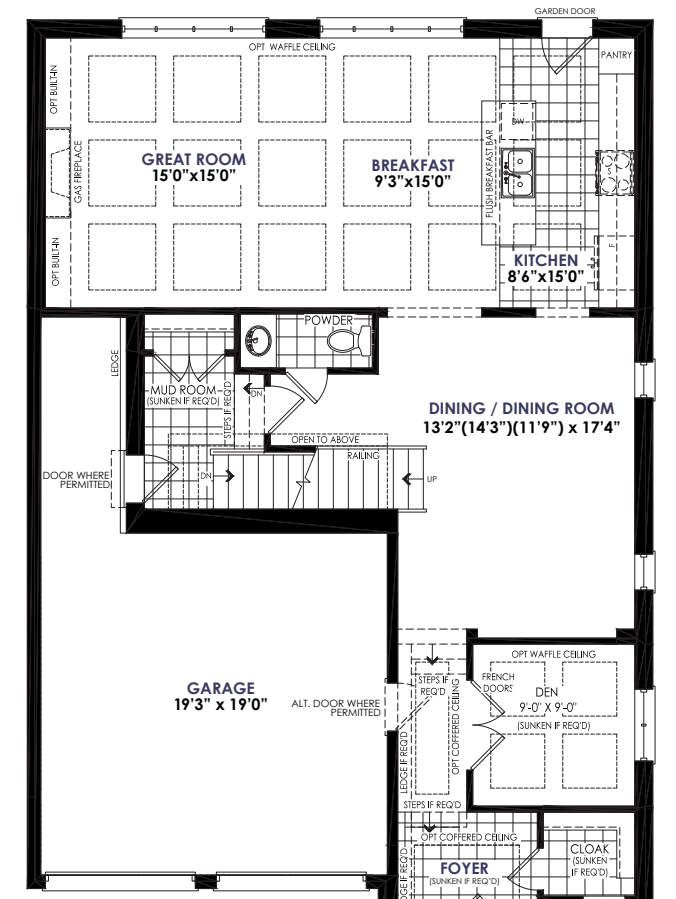
ELEV. A  
UPPER LEVEL



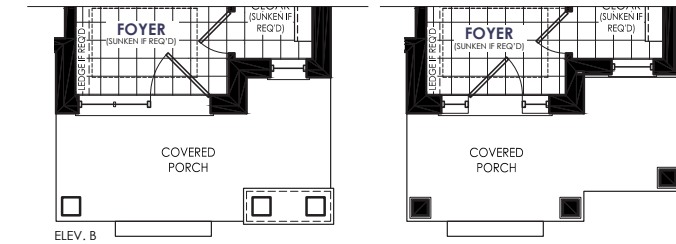
ELEV. B



ELEV. C



ELEV. A  
MAIN LEVEL



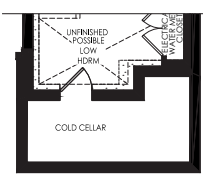
ELEV. B



ELEV. C



ELEV. A & C  
LOWER LEVEL



ELEV. B